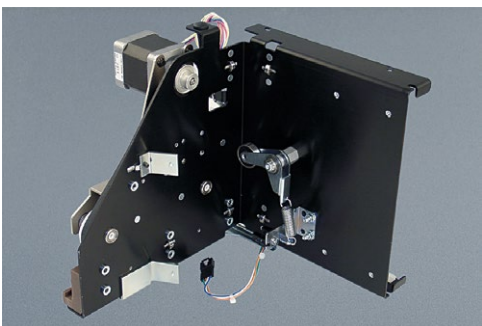
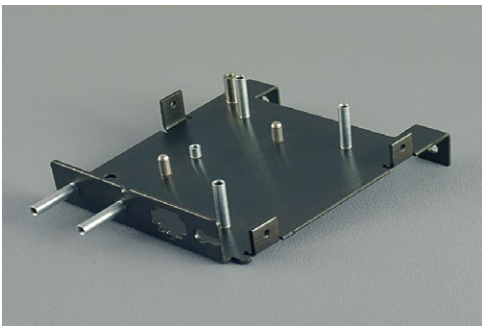




# Precision Manufacturing

For more than three decades, XLI Corporation has provided precision manufacturing services for some of the nation's leading suppliers of medical, mass data storage, circuit board insertion, digital imaging and printing, manufacturing automation, office automation, process control, communications, and defense equipment. Now, through our recently expanded engineering and production capabilities, XLI can provide the precision manufacturing services needed for your projects.



## Process Approach

XLI uses the latest equipment, methods, and technologies for environmentally responsible and cost effective manufacturing. We combine Computer Numerically Controlled (CNC) equipment, precision manual and semiautomatic conventional equipment, documented procedures and work instructions, Statistical Process Control (SPC) techniques, a skilled and trained workforce, and a process engineering approach to achieve high quality and productivity for each project.

## The XLI Advantage

XLI is your complete source for prismatic machining, rotational machining, sheet metal fabrication, assembly and test services, and design services. Our diverse capabilities make it possible to provide you with complex components and assemblies delivered on time and at competitive prices. And, our specialized knowledge and expertise in precision manufacturing technologies makes it possible to assist your company in saving time and money at every stage of product design and development.

Call us at the design stage for design assistance, prototypes, and pilot programs to ensure manufacturability. Call us at the production stage as your source for lean manufacturing based production of precision components and assemblies.

## Flexible Arrangements

XLI is ready to work with your company under flexible business arrangements that can improve your company's competitive position. We have the knowledge, experience, and financial and manufacturing resources needed to support requirements for fixed schedule, make-to-order, Kanban, rolling horizon, lean manufacturing, Just-In-Time, consignment, supplier stocking, and other types of business arrangements for reducing costs while responding to constantly changing market conditions.

## One Call Simplicity

XLI provides complete supply chain management services for purchasing and controlling the materials, components, subassemblies, and services needed to produce finished products for your use. By choosing XLI as your precision manufacturing partner, you can simplify and streamline your procurement process while reducing costs for shipping and quality assurance related activities.

Call us today to experience the XLI advantage on your projects.

## Customer Satisfaction

We are committed to increasing customer satisfaction, continuously improving our manufacturing capabilities and providing opportunities for our employees to achieve their maximum potential. Our focus is on establishing long term, value based, relationships with each customer.

XLI Corporation • 55 Vanguard Parkway • Rochester, NY 14606  
Phone: 888-881-2250 • 585-436-2250 • Fax: 585-235-5260 • [www.xlionline.com](http://www.xlionline.com)  
An ISO 9001:2015 Registered Company — Manufacturing Complex Products Faster