



# Facilities List

XLI Corporation is equipped with modern manufacturing and office space, a highly trained staff, and the most up to date machinery, equipment, and software available to meet your needs for precision manufacturing services. Call us today to experience the XLI advantage for your projects.

## Prismatic Machining

- (2) Enshu JE60S High Speed CNC Dual Pallet Machining Center (23.6" X 23.6" X 24.8")
- (1) Haas DT-1 CNC Drill-Tap Machine (20" X 16" X 15.5")
- (1) Toyoda FH450S High Speed Horizontal CNC Dual Pallet Machining Center (23.6" X 23.6" X 23.6")
- (1) Toyoda FA400 High Speed Horizontal CNC Dual Pallet Machining Center (19" X 19" X 23.6")
- (2) Kitamura Mycenter 1Xif High Speed Rotary Dual Pallet Machining Center (20" X 14" X 18")
- (1) Matsuura MC RA-1G Vertical CNC Dual Pallet Machining Center (20" X 15" X 18")
- (1) Matsuura MC RA-II Vertical CNC Dual Pallet Machining Center (24" X 16" X 18")
- (1) Fancu Robodril α-T21iDL High Speed Vertical CNC Dual Pallet Machining Center (27" X 15" X 13.2")
- (1) Haas VF-2 High Speed Vertical Machining Center (30" X 18" X 24")
- (1) Bridgeport Series 2 Mill (15" X 30")
- (15) Bridgeport Series 1 Mills (8" X 42")
- (1) Hansford Davis Keyseater (3/4" Broach Capability)
- (4) Haas Rotary Indexers
- (2) Chick Multi-Lok Indexable Workholding Systems

## Rotational Machining

- (1) Doosan Puma TT1800SY Twin Spindle, Twin Turret Turning Center (2.65" through spindle)
- (2) Citizen L20 Type VII CNC Swiss Type Automatic Lathe with Automatic Hydraulic Bar Feeder
- (1) Star SR16 CNC Swiss Type Automatic Lathe with Automatic Hydraulic Bar Feeder
- (2) Hardinge Conquest GT27SP Lathes with Bar Feeder (1.0625" Through Spindle)
- (1) Hardinge Conquest T-42 Big Bore Lathe with Live Tooling, Subspindle, 10" Chuck, and Bar Feeder (2" Through Spindle)
- (1) Hardinge Conquest GT27SP Lathe with Auto Loader, Dual Collet Robotic Loader, Live Tooling, 4" Chuck, and Bar Feeder (1.0625" Through Spindle)
- (1) Hardinge Quest 6/42 Lathe with Live Tooling, Subspindle, High Pressure Coolant, Y-Axis, C-Axis, 6" Chuck, Bar Feeder, and Robotic Unloader (1.625" Through Spindle)

## Sheet Metal Fabrication

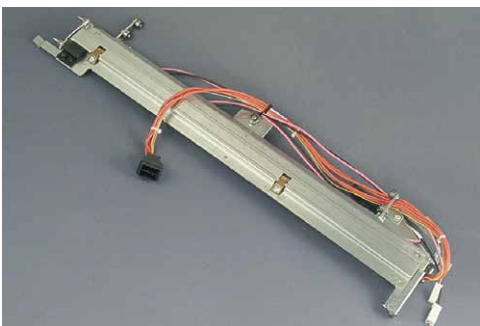
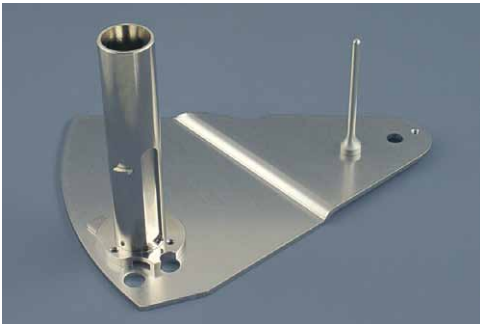
- (1) Mazak Champion New Turbo-X48 1000 Watt Laser (4' x 8' Table)
- (1) Trumpf TC200R CNC Sheet Metal Processing Center (80" X 50")
- (1) Niagara Press Brake with Hurco CNC Back Gage (10' Length, 135 Ton)
- (1) Trumpf Press Brake Trumabend V-Series CNC 6 Axis with European Style Tooling (8' Length, 95 Ton)
- (1) DiAcro Press Brake (4' Length, 17 Ton)
- (1) Niagara 10 Gauge 4' Shear
- (1) PEMSerter
- (2) Haeger Model 618 Fastener Insertion System
- (1) Miller Syncrowave 250 TIG Welder (300 Amp)
- (1) Teledyne AVA-1 Spot Welder
- (1) Millermatic MIG Welder (250 Amp)
- (1) Steelmaster Prima 2KB9 Finishing/Deburring Center (37")

## Engineering

- SolidWorks
- Mastercam
- AutoCAD
- Microsoft Project
- Epicor Vista Manufacturing Software

## Quality

- (1) Brown & Sharpe Global Image 9128 DCC Coordinate Measuring Machine
- (1) Brown & Sharpe XLO 14" Optical Comparator
- (1) TESASCOPE 355H PLUS 14" Optical Comparator with Digital Readout
- (1) Mitutoyo PH-3515F Horizontal Optical Comparator
- (2) Brown & Sharpe TESA-HITE 600 plus D Height Gage
- Full range of micrometers, fixed limit gages, and related equipment
- (1) Wilson 4JR-BB Hardness Tester
- MINITAB Statistical and Graphical Analysis Software
- PCI Gage Management Software
- Genesis QA2500 Data Collection Network



XLI Corporation • 55 Vanguard Parkway • Rochester, NY 14606

Phone: 888-881-2250 • 585-436-2250 • Fax: 585-235-5260 • [www.xlionline.com](http://www.xlionline.com)  
An ISO 9001:2008 Registered Company — Manufacturing Complex Products Faster