



Technologies

Project Management

At XLI each project is assigned to a Project Manager with the knowledge, background, and experience needed to ensure successful completion to your company's exact requirements for price, delivery, and quality. Our Project Managers serve as direct links to projects within XLI and are ready to provide information and assistance for your company at any time in response to changing market conditions.

CAD/CAM Integration

Our precision manufacturing capabilities are supported through advanced Computer Aided Design (CAD) and Computer Aided Manufacturing (CAM) software technologies. We can accept your electronic design documentation in industry standard file formats via e-mail or our secure FTP site as the starting point for fast and efficient part programming. We have complete internal capabilities for Computer Numerical Control (CNC) program development and verification. We also have complete capability for direct program download to our CNC equipped machines for maximum productivity and enhanced process control.

High Speed Machining

XLI uses the latest high speed machining technologies to ensure that complex products are manufactured quickly and economically. From dual pallet 20,000 RPM CNC machines for prismatic machining, to multi-spindle CNC Swiss turning machines for rotational machining, to high power laser and CNC turret punch press equipment for sheet metal fabrication, XLI has the capabilities needed to achieve the highest productivity.

Information Technology

Our completely integrated Management Information System is based on Vista from Epicor. With capabilities for Quoting and Estimating, Purchasing, Job Control, Inventory Control, Scheduling, Shipping, Accounting, and additional functions, Vista makes it possible to monitor and manage every aspect of your project to ensure successful completion.

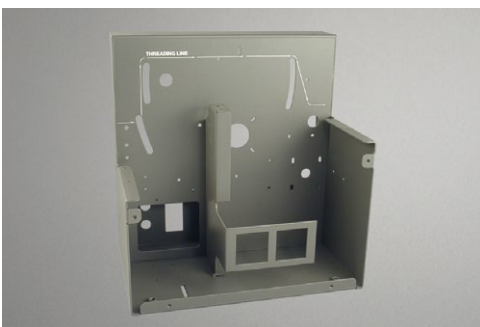
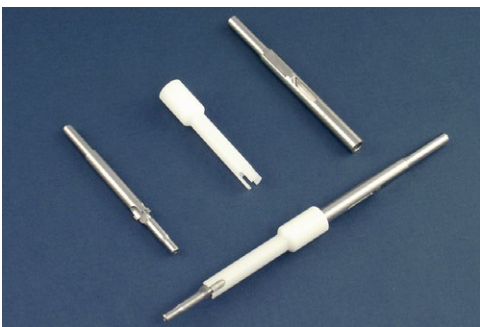
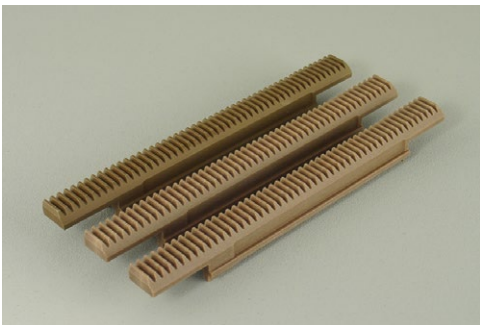
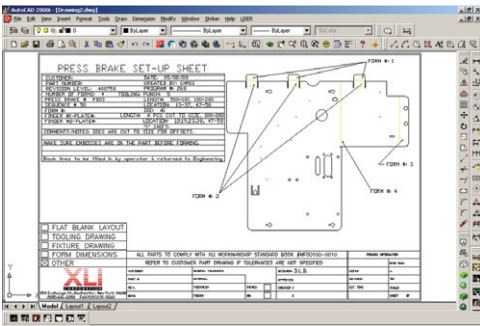
Quality Management System

Our Quality Management System is Registered to ISO 9001:2015 and incorporates the latest advances in quality technologies. We have broad experience in meeting the most demanding requirements for product conformity, documentation, and traceability for materials, components, and assemblies.

All of our services are performed in accordance with internally developed procedures and work instructions that are fully documented with CAD drawings, part program listings, digital photographs, process routings, data collection forms, and additional elements as required for complete control of the manufacturing process. And, the integrity of each process is maintained through the use of ongoing data collection, analysis, and reporting. Our comprehensive approach includes Statistical Process Control techniques, product and process audits, calibration programs, gage repeatability and reproducibility studies, and preventive maintenance programs.

Choose XLI

Choose XLI as your source for precision manufacturing. Call us today to experience the XLI advantage on your projects.



XLI Corporation • 55 Vanguard Parkway • Rochester, NY 14606

Phone: 888-881-2250 • 585-436-2250 • Fax: 585-235-5260 • www.xlionline.com
An ISO 9001:2015 Registered Company — Manufacturing Complex Products Faster